



**Low wall  
mounted range**



**CALIFORNIA SXN  
Ceiling mounted Splits**

**Airwell**  
**Air Conditioning**

## LOW WALL MOUNTED RANGE

Technology and innovation are reaching previously unimagined levels in optimising user comfort. Inverter technology combines performance and energy savings to satisfy your most demanding requirements. The **SXN** low wall mounted and ceiling mounted console combines aesthetics, clean lines and HIGH TECH technology. With a broad range of 6 Cooling Only models (from 2,660 to 8,720 W) or Heat pump models (from 2,790 W to 8,430 W), this range is particularly suited to residential and tertiary applications and covers the air conditioning needs of all sizes of premises. With their multi-position integration possibilities (low wall mounted or ceiling mounted) and ease of installation and maintenance thanks to easy access to all components, these appliances have been designed to procure a very high user comfort level as well as being extremely easy to install.



The **SXN** low wall mounted or ceiling mounted Splits range is available with the environmentally friendly **R410A** refrigerant fluid.

This fluid offers high energy efficiency, whilst protecting the ozone layer and being easily recyclable. Its high volumetric mass and considerable energy efficiency provide high coefficients of performance and therefore significant energy savings.

### ■ Design

SXN indoor units benefit from clean and flowing lines to blend harmoniously into all types of interior décors. In addition, this range includes a "High Tech" control panel, representing a definite advantage for precise air conditioning control.

### ■ Proven technology

Electronic regulation and programming, component reliability, as well as total microprocessor management of all operating and safety parameters guarantee unequalled comfort levels. Outdoor units are equipped with the latest generation of rotary compressors to provide extremely silent running and operation over a wide operating range, as well as excellent performance levels and low energy consumption, in particular thanks to the use of the environmentally friendly R410A refrigerant fluid.

### ■ Unequalled comfort

California SXN models benefit from dual automatic sweeping that ensures even distribution of treated air. Combined with a 3 level high efficiency filtration system (Standard, Electrostatic, Active charcoal), these features result in significant improvements in user comfort and make the California SXN the ideal solution for air conditioning small and medium sized surface areas in the residential and tertiary sectors.

### ■ Night running

This function enables adapts the system's temperature, both in Cooling and in Heating modes, for ideal night time rest conditions and energy savings. With this programmable function energy reductions of 7% per degree can be achieved, representing considerable savings.

### ■ Airconet control system



Thanks to the communication gateway to which several cassettes can be connected, and by using a simple Internet navigator programme, the Airconet system allows for centralised and remote management of all your indoor units (by group of indoor units, by room, by floor...) . In addition to improved occupier comfort (programming the unit to operate before the occupants' arrival), reduced energy bills thanks to precise and individual unit consumption control and a simplified system management, the Airconet system requires no specific software installation and enables you to be informed of any incident in real time by e-mail or SMS.

### ■ Evolution with dual automatic treated air sweeping

SXN air conditioners are equipped with 2 motorised treated air blowing flaps, one for VERTICAL sweeping (up and down), and one for HORIZONTAL sweeping (left to right). This system ensures perfectly even air distribution throughout the room.



### ■ Innovation with bi-directional blowing

Furthermore, SXN air conditioners have been designed to provide air conditioning in two adjacent rooms if required.

It is just a matter of installing the connection kit (available as an accessory) to distribute treated air between the rooms and of installing a blowing grille in the second air-conditioned room. A movable flap enables air distribution between the rooms to be adjusted.



Energy		Air-conditioner
Manufacturer		<b>Airwell</b>
Outside unit		GC 9 NRC R410
Inside unit		ST SX 9 N
More efficient		<b>A</b>
Less efficient		
Annual energy consumption kWh in cooling mode <small>(Actual consumption will depend on how the appliance is used and climate)</small>		
Cooling output	kW	2,66
Energy efficiency ratio <small>Full load (the higher the better)</small>		3,22
Type	Cooling only	
	Cooling + Heating	←
	Air cooled	←
	Water cooled	
Heat output	kW	
Heating performance <small>A: higher G: lower</small>		
Noise <small>(dB(A) re 1 pW)</small>		35
Further information is contained in product brochures		
<small>Norm EN 814 Air-conditioner Energy Label Directive 2002/31/EC</small>		

## ■ SXN indoor units



**SXN 9/12/15**



**SXN 18/24/30**

## ■ Outdoor units

The heat-stable polyester material structure provides a reduction in the noise level, weight and a prolonged service life. The anticorrosion treatment with a High density powder paint coating ensures high resistance whatever the operating conditions.

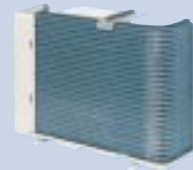


**GCNG 9/12/14**



### ❖ COMPRESSOR

A variable power DC INVERTER rotary type, this compressor provides high efficiency and increased acoustic isolation.



### ❖ CONDENSER

"Bluefin" hydrophilic treatment promotes the flow of condensates, while also providing corrosion protection to maintain performance levels and prolonging the service life.



### ❖ PROPELLER

With 3 aerodynamic blades, the propeller offers better balance, enhances the exchange process and makes silent operation possible.

The CALIFORNIA low wall mounted range: innovation serving comfort

## ■ Remote control

Automatic cooling/heating regulation.

- 3 ventilation (FAN) speeds.
- Automatic ventilation.
- I FEEL function.
- Night running.
- Dual treated air sweeping: horizontal and vertical.
- Dehumidification.
- 2 programming ranges: week & weekend.
- Backlit LCD display.



# LOW WALL MOUNTED RANGE



## CALIFORNIA SXN Series

		<b>SXN 9</b> <b>SXN 9 RC</b>	<b>SXN 12</b> <b>SXN 12 RC</b>	<b>SXN 15</b> <b>SXN 15 RC</b>	<b>SXN 18</b> <b>SXN 18 RC</b>	<b>SXN 24</b> <b>SXN 24 RC</b>	<b>SXN 30</b> <b>SXN 30 RC</b>
<b>Cooling Capacity<sup>(2)</sup></b>	<b>kW</b>	<b>2,66</b>	<b>3,52</b>	<b>4,1</b>	<b>5,5</b>	<b>6,83</b>	<b>8,3</b>
Power input	kW	0,82	1,15	1,35	1,86	2,27	2,91
EER/ Energy Label		3,22/A	3,05/B	3,02/B	3,02/B	3/B	2,85/C

<b>Heating capacity<sup>(1)</sup></b>	<b>kW</b>	<b>2,79</b>	<b>3,7</b>	<b>4,5</b>	<b>5,75</b>	<b>7,03</b>	<b>8,30</b>
Power input	kW	0,86	1,15	1,33	1,77	2,13	2,63
COP/ Energy Label		3,24/C	3,22/C	3,26/C	3,25/C	3,3/C	3,15/D

<b>Indoor units</b>		<b>SXN 9</b>	<b>SXN 12</b>	<b>SXN 15</b>	<b>SXN 18</b>	<b>SXN 24</b>	<b>SXN 30</b>
Dehumidification		1,1	1,5	1,9	1,9	2,7	4,2
Air flow (LS/NS/HS)	m³/h	290/330/350	350/390/420	350/390/510	700/820/930	780/900/1000	700/895/1020
Acoustic pressure to 1m (LS/NS/HS) <sup>(3)</sup>	dB(A)	35/37/39	38/41/45	38/43/48	45/48/51	48/51/53	44/48/52
Net Weight	kg	21	22	22	30	33	32
Dimensions (WidthxDepthxHeight)	mm	820x190x630	820x190x630	820x190x630	1 200x190x630	1200x190x630	1200x630x190

<b>Outdoor units</b>		<b>GC 9N</b> <b>GC 9N RC</b>	<b>GC 12 N</b> <b>GC 12 NRC</b>	<b>GC 14 N</b> <b>GC 14 NRC</b>	<b>GC 18 N</b> <b>GC 18 NRC</b>	<b>GC 24 N</b> <b>GC 24 NRC</b>	<b>GC 30 N</b> <b>GC 30 NRC</b>
Compressor type		Rotary	Rotary	Rotary	Rotary	Rotary	Rotary
Operating limit Winter/Summer				-10°C / +43°C			
Air flow	m³/h	1780	1850	2160	2480	3100	3150
Acoustic pressure to 1m	dB(A)	49	53	54	58	58	60
Net Weight	kg	35	36	42	56	74	78
Dimensions (WidthxDepthxHeight)	mm	795x290x610	795x290x610	795x290x610	846x302x690	900x340x680	900x340x680

### Linking specifications between indoor and outdoor units

Linking pipes (not supplied)							
Max. lenght/ Max. height	m	15/7	15/7	15/7	25/15	30/15	30/15
Suction pipe diameter	Inchs	3/8	3/8	1/2	1/2	5/8	5/8
Liquid pipe diameter	Inchs	1/4	1/4	1/4	1/4	3/8	3/8

### Power supply 1~230 V - 50 Hz

Power cable section (without heating)	mm²	3 x 1,5	3 x 1,5	3 x 1,5	3 x 2,5	3 x 2,5	3 x 4
Electrical connections Ind./Out.	mm²	4x1,5	4x1,5	4x1,5	5x2,5*	5x2,5*	5x1,5
Electrical connections Ind./Out.	mm²	5 x 1,5	5 x 1,5	5 x 1,5	5 x 2,5*	5 x 2,5*	5 x 1,5
Power supply side		Indoor	Indoor	Indoor	Indoor or Outdoor	Indoor or Outdoor	Outdoor
Fuse am	A	10	10	15	15	20	25

### Power supply 3N~400 V - 50 Hz

Power cable section (without heating)	mm²	-	-	-	5 x 1,5	5 x 1,5	5 x 1,5
Electrical connections Ind./Out.	mm²	-	-	-	5 x 1,5	5 x 1,5	5 x 1,5
Electrical connections Ind./Out.	mm²	-	-	-	6 x 1,5	6 x 1,5	6 x 1,5
Power supply side		-	-	-	Outdoor	Outdoor	Outdoor
Fuse am	A	-	-	-	6	8	12

(1) Nominal heating capacity: International conditions 20°C/12°C wet bulb – Outside air temperature: 7°C/6°C wet bulb. (2) Nominal cooling capacity: International conditions (NF EN 255.2 / 814.2 standards) - 27°C/19°C wet bulb – Outside air temperature: 35°C/24°C wet bulb. (3) Global acoustic pressure in dB(A) (1 m) at nominal conditions: outdoor unit in an open area against a reflective background – indoor unit: installation in an average sized room, (PV-0.5s reverberation). \* In Indoor.

# Airwell



ACE MARKETING - I bis, av. du 8 mai 1945 - Saint-Quentin-en-Yvelines  
F - 78284 Guyancourt Cedex  
Fax : +33 (0) 1 39 44 65 17 - Tel.: +33 (0) 1 39 44 78 00  
[www.airwell.com](http://www.airwell.com)

Your approved **Airwell** distributor

